

# MOOD

## CFW-2 1÷5

Wall-mounted fan coil with inverter motor for heating and cooling

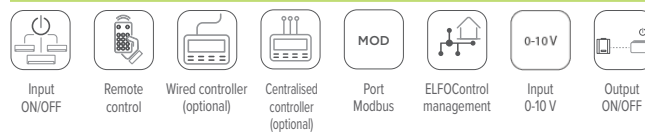
### COMFORT



### HEALTH



### MANAGEMENT AND CONNECTIVITY



### CONVENIENCE



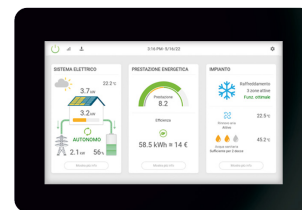
- ✓ Standard supplied with 3-way ON/OFF valves and potential-free contact for generator demand
- ✓ Quiet and efficient, thanks to the fan's brushless DC motor
- ✓ Standard supplied infrared remote control
- ✓ Standard supplied input contact for 0-10V management
- ✓ Management via Modbus port with connection to BMS or CONTROL4 NRG

## Management with energy assistant

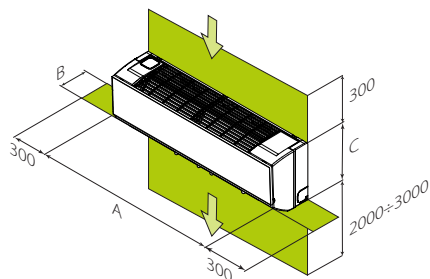
Mood can be connected to CONTROL4 NRG, the touch-screen centraliser that coordinates the entire system intelligently and efficiently to always ensure the utmost comfort at the lowest possible cost.

By connecting the fan coils to this central "brain", the heat diffusion system can be managed with "room by room" temperature control by turning the individual thermostats with temperature and humidity control (where available) or directly on the terminal units, changing their speed and reducing consumption. The temperature in the house will certainly be more consistent and controlled, for maximum comfort.

It is also possible to create and manage dual emitter systems: fan coils for cooling and radiant panels for heating.









## dimensions and connections



For trouble-free operation of the unit it is essential to maintain the safety distances indicated by the green areas.

Size			1	2	3	4	5
Dimensions	AxCxB	mm		916x290x233			1.074x317x237
Weight		kg		12,7			14,9
External diameters	Water	inch			3/4"		
	Condensate drain	mm			20		

## accessories

	<b>KJR90X</b>	KJR90 electronic room control for wall installation		<b>CCM-180A/WS</b>	Wired centraliser with 6.2" touchscreen display and weekly scheduler
	<b>KJR150X</b>	Indoor units' group controller		<b>CCM-270A/WS</b>	Wired centraliser with 10.1" touchscreen display and weekly scheduler
	<b>CCM30BX</b>	Touch-key indoor units' centralized controller			
	<b>CCM09</b> <i>to exhaustion</i>	Wired centraliser with weekly scheduler			

## technical data

Size				1	2	3	4	5
Cooling	Total Capacity	Water 7/12°C	kW	2,70	2,91	3,81	4,47	4,87
	Sensible Capacity	Ambient air 27°C/19°Cwb	kW	2,15	2,33	3,18	3,67	4,11
	Water flow-rate	Maximum ventilation speed	l/h	465	501	656	770	839
	Water pressur drop		kPa	31,6	37,2	56,8	41,2	50,7
Heating	Capacity	Water 45/40°C	kW	2,12	3,23	4,30	4,36	5,26
	Water flow-rate	Ambient air 20°C	l/h	365	556	741	751	906
	Water pressur drop	Maximum ventilation speed	kPa	37,5	40,6	61,9	43,7	51,7
	Capacity	Water 50°C/cool water flow-rate	kW	3,4	3,68	4,59	5,43	5,98
	Water flow-rate	Ambient air 20°C	l/h	465	501	656	770	839
	Water pressur drop	Maximum ventilation speed	kPa	13,8	15,7	24,8	45,7	54,6
Heat recovery capacity	Minimum / Maximum	W	10/13	9/15	15/34	13/26	18/38	
Operating pressure	Water content	bar			16			
Airflow <sup>1</sup>	Minimum / Nominal / Maximum	m <sup>3</sup> /h	400/454/492	413/485/585	590/689/825	634/741/862	717/849/979	
Sound power	Minimum / Maximum	dB(A)	39/44	35/44	47/57	42/50	47/56	
Sound pressure @1m	Minimum / Maximum	dB(A)	27/32	23/32	35/45	30/38	35/44	
Power supply	Voltage/Frequency/Phases	V/Hz/n°			230/50/1			

Sound levels tested in an anechoic chamber according to ISO 3744

(1) With clean filters