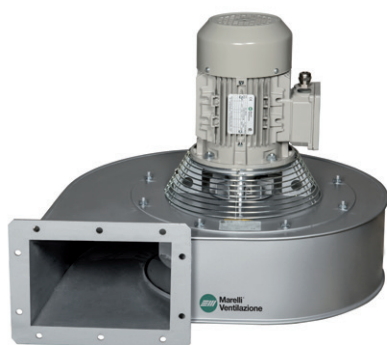


LM/F

Centrifugal fans especially designed for extracting hot air from ovens at a max. temperature of 300°C and a horizontal air outlet

Especially designed for bread and pastry ovens as well as industrial ovens



Fan:

- Sheet steel casing
- Galvanised sheet steel multiblade impeller
- Motor directly coupled to flange B-5
- With one or two cooling impellers mounted on the motor shaft to dissipate the heat

- Three-phase 230/400 V 50 Hz (up to 4 kW) and 400/690 V 50 Hz (powers higher than 4 kW)
- Maximum temperature of air to be carried: -25°C +300°C

Finish:

- Corrosion resistant with heat resistant paint, aluminium in colour

On request:

- Special windings for different voltages
- Stainless sheet fan casing

Motor:

- IE3 efficiency motors for powers equal to or higher than 0.75 kW except single-phase, 2-speed and 8-pole
- IP55 protection

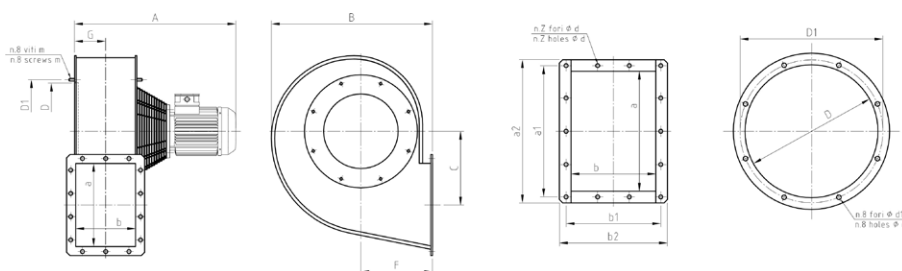
Characteristics

MOD.	FRAME	kW	RPM	dB(A)	CAPACITY (m³/s)																															
					0.12	0.13	0.15	0.17	0.18	0.2	0.23	0.27	0.3	0.33	0.37	0.42	0.47	0.53	0.6	0.67																
																				TOTAL PRESSURE (mmH ₂ O)																
LM 25/F	80A4	0.55	1360	51	31	32	33	34	35	36	38	40	40	41	40	40	39	34																		
LM 28/F	80B4	0.75	1360	56						38	40	42	44	45	47	48	50	52	50																	
LM 29/F	90S4	1.1	1380	56								37	39	40	42	44	45	47	48	50																
LM 33/F	90S4	1.1	1380	56						60	61	62	62	63	64	65	68	70	72	75																
LM 36/F	100L4	2.2	1410	61										71	71	72	74	75	75	76	77															
LM 39/F	100L4	2.2	1410	73											84	85	86	87	89	92	95															

MOD.	FRAME	kW	RPM	dB(A)	CAPACITY (m³/s)															
					0.76	0.83	0.92	1	1.17	1.33	1.5	1.67	1.83	2	2.33					
					TOTAL PRESSURE (mmH ₂ O)															
LM 28/F	80B4	0.75	1360	56	45	40														
LM 29/F	90S4	1.1	1380	56	52	52	50	47	40											
LM 33/F	90S4	1.1	1380	56	76	75	73	70	60											
LM 36/F	100L4	2.2	1410	61	81	82	85	89	89	90	87	81	72	65						
LM 39/F	100L4	2.2	1410	73	97	100	102	105	113	115	118	119	118	118	113					

Flow level margin ±5%
Noise level margin +3...5 dB

Dimensions mm



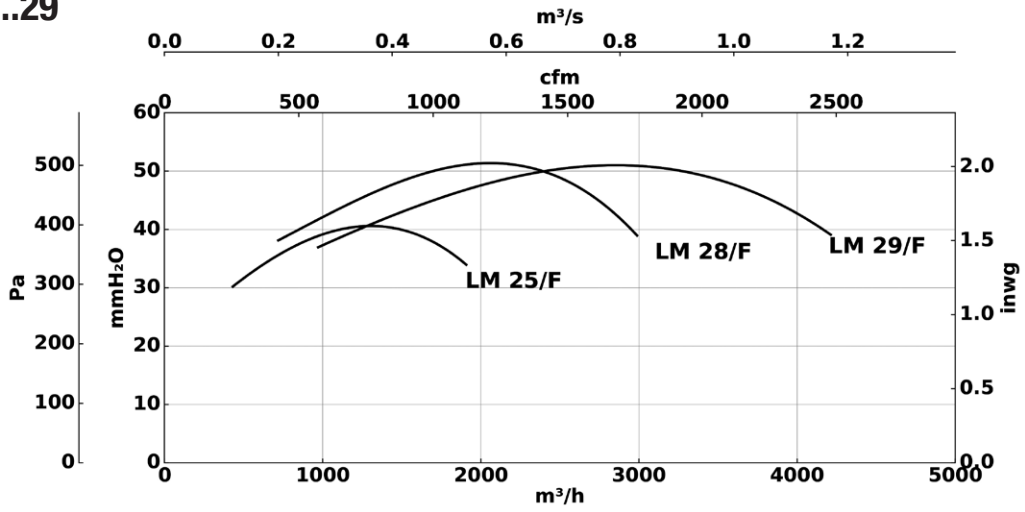
MOD.	FRAME	kW	RPM	A	B	C	F	G	D	D1	m	a x b	kg*
LM 25/F	80A4	0.55	1360	520	430	175	190	82	260	280	M6	225 x 160	28
LM 28/F	80B4	0.75	1360	545	485	222	215	94	290	310	M8	250 x 180	30
LM 29/F	90S4	1.1	1380	560	485	222	215	94	290	310	M8	250 x 180	35
LM 33/F	90S4	1.1	1380	580	570	255	250	104	350	370	M8	296 x 200	50
LM 36/F	100L4	2.2	1410	635	570	255	250	104	380	405	M8	296 x 200	60
LM 39/F	100L4	2.2	1410	635	680	308	300	129	400	430	M8	356 x 250	90

OUTLET NOZZLE										
MOD.	a x b	a1	b1	a2	b2	Z	d	d1	D	D1
LM 25/F	226 x 161	251	186	276	211	10	12	8	260	280
LM 28/F	254 x 185	280	210	304	235	14	12	10	290	310
LM 29/F	254 x 185	280	210	304	235	14	12	10	290	310
LM 33/F	299 x 205	325	230	349	255	14	12	10	350	370
LM 36/F	299 x 205	325	230	349	255	14	12	10	380	405
LM 39/F	361 x 255	395	285	431	325	14	12	10	400	430

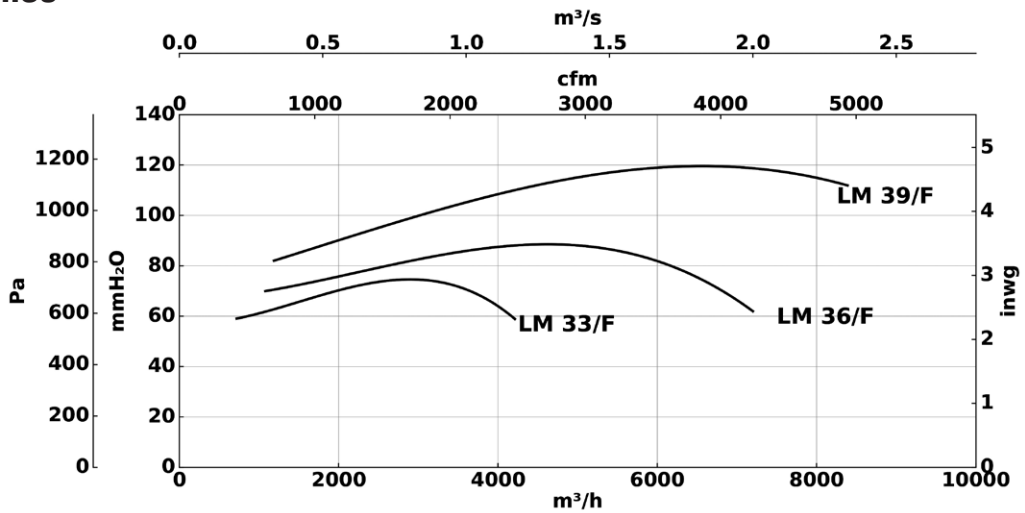


Characteristic curves

LM/F 25...29



LM/F 33...39



Total pressure

Flow level margin ±5%
 Noise level margin +3...5 dB
 Margin of kW absorbed ±3%